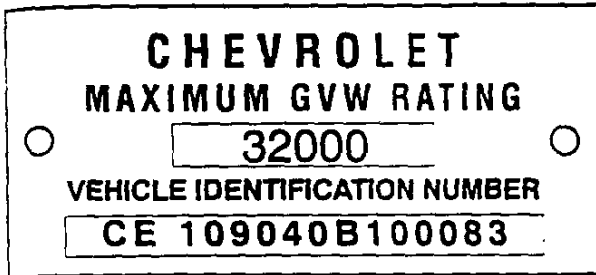


**VEHICLE IDENTIFICATION NUMBER**

A combination Gross Vehicle Weight (GVW) and serial number plate is used on 1970 Chevrolet trucks. It is attached to the upper left-hand door pillar on most cab models. Cowl model plates are attached to the left cowl inner panel. The number consists of alpha and numeric characters designating the chassis, engine, series (GVW range), model, model year, assembly plant and assembly sequence number.



**FIRST DIGIT:** Identifies the chassis

CHASSIS	CODE
Conventional cab .....	C
4-Wheel drive .....	K

**SECOND DIGIT:** Identifies the engine

ENGINE	CODE
3-cylinder .....	E
5-cylinder .....	S

**THIRD DIGIT:** Identifies the GVW range

GVW RANGE	CODE
3900-5800# .....	1
5200-7500# .....	2
6600-14,000# .....	3

**FOURTH AND FIFTH DIGITS:** Identify the cab-to-axle dimension

CAB-TO-AXLE DIMENSION	CODE
30-35" .....	05
54-59" .....	09
60-65" .....	10
84-89" .....	14

**SIXTH AND SEVENTH DIGIT:** Identifies the body

BODY	CODE
Chassis-cowl .....	02
Chassis-cab .....	03
Steepside pickup .....	04
Panel .....	05
Suburban (rear doors) .....	06
Utility .....	14
Suburban (tail & liftgate) .....	16
Fleetside pickup .....	34

**EIGHTH DIGIT:** Identifies the model year (1970)

**NINTH DIGIT:** Identifies the assembly plant

ASSEMBLY PLANT	CODE
Lakewood/Atlanta, GA .....	A
Baltimore, MD .....	B
Flint, MI .....	F
Fremont, OH .....	Z
Janesville, WI .....	J
Pontiac, MI .....	P
St. Louis, MO .....	S
Tarrytown, NY .....	T
Oshawa, Ontario, CAN .....	1

**LAST SIX DIGITS:** Represent the basic production number

**EL CAMINO**

The El Camino used a 13 digit Vehicle Identification Number (VIN), with the first seven characters comprising the descriptive model codes and assembly plants, and the last six digits representing the basic sequential serial number. The plate is located on the top left side of the instrument panel, visible through the windshield.



**FIRST DIGIT:** Identifies the division (1) Chevrolet

**SECOND AND THIRD DIGITS:** Identify the series

SERIES	CODE
El Camino, 6-cyl. ....	33
El Camino, 8-cyl. ....	34
Custom El Camino, 6-cyl. ....	35
Custom El Camino, 8-cyl. ....	36

## 1970 CHEVROLET TRUCK

**FOURTH AND FIFTH DIGITS:** Identify the body style

BODY STYLE	CODE
2-Door sedan pickup .....	80

**SIXTH DIGIT:** Identifies the model year (1970)

**SEVENTH DIGIT:** Identifies the assembly plant

ASSEMBLY PLANT	CODE
Atlanta/Lakewood, GA .....	A
Baltimore, MD .....	B
Flint, MI .....	F
Kansas City/Leeds, MO .....	K
Los Angeles/Van Nuys, CA .....	L
Arlington, TX .....	R

**LAST SIX DIGITS:** Represent the basic production number

## MODEL, WHEELBASE AND GVW INFORMATION

### EL CAMINO

MODEL	WHEEL		CODE	
	BASE	6-CYL	8-CYL	
Standard .....	115"	13380		13480
Custom .....	115"	13580		13680

### C-10 SERIES

MODEL	WHEEL		CODE	
	BASE	6-CYL	8-CYL	
Blazer .....	104"	CS10514		CE10514
Stepside pickup .....	115"	CS10704		CE10704
Stepside pickup .....	127"	CS10904		CE10904
Fleetside pickup .....	115"	CS10734		CE10734
Fleetside pickup .....	127"	CS10934		CE10934
Chassis-cab .....	115"	CS10703		CE10703
Chassis-cab .....	127"	CS10903		CE10903
Panel .....	127"	CS10905		CE10905
Suburban (rear doors) .....	127"	CS10906		CE10906
Suburban (tail & liftgate) .....	127"	CS10916		CE10916

## 1970 CHEVROLET TRUCK

### C-20 SERIES

MODEL	WHEEL		CODE	
	BASE	6-CYL	8-CYL	
Stepside pickup .....	127"	CS20904		CE20904
Fleetside pickup .....	127"	CS20934		CE20934
Longhorn pickup .....	133"	CS21034		CE21034
Chassis-cab .....	127"	CS20903		CE20903
Panel .....	127"	CS20905		CE20905
Suburban (rear doors) .....	127"	CS20906		CE20906
Suburban (tail & liftgate) .....	127"	CS20916		CE20916

### C-30 SERIES

MODEL	WHEEL		CODE	
	BASE	6-CYL	8-CYL	
Stepside pickup .....	133"	CS31004		CE31004
Longhorn pickup .....	133"	CS31034		CE31034
Longhorn pickup .....	133"	CS31034		CE31034
Chassis-cab .....	133"	CS31003		CE31003
Chassis-cab .....	157"	CS31403		CE31403
Chassis-cowl .....	133"	CS31002		CE31002

### K-10 SERIES

MODEL	WHEEL		CODE	
	BASE	6-CYL	8-CYL	
Blazer .....	104"	KS10514		KE10514
Stepside pickup .....	115"	KS10704		KE10704
Stepside pickup .....	127"	KS10904		KE10904
Fleetside pickup .....	115"	KS10734		KE10734
Fleetside pickup .....	127"	KS10934		KE10934
Chassis-cab .....	115"	KS10703		KE10703
Chassis-cab .....	127"	KS10903		KE10903
Suburban (rear doors) .....	127"	KS10906		KE10906
Suburban (tail & liftgate) .....	127"	KS10916		KE10916

### K-20 SERIES

MODEL	WHEEL		CODE	
	BASE	6-CYL	8-CYL	
Stepside pickup .....	127"	KS20904		KE20904
Fleetside pickup .....	127"	KS20934		KE20934
Chassis-cab .....	127"	KS20903		KE20903
Suburban (rear doors) .....	127"	KS20906		KE20906
Suburban (tail & liftgate) .....	127"	KS20916		KE20916